

Reproductive system - exam questions

2012 - Higher

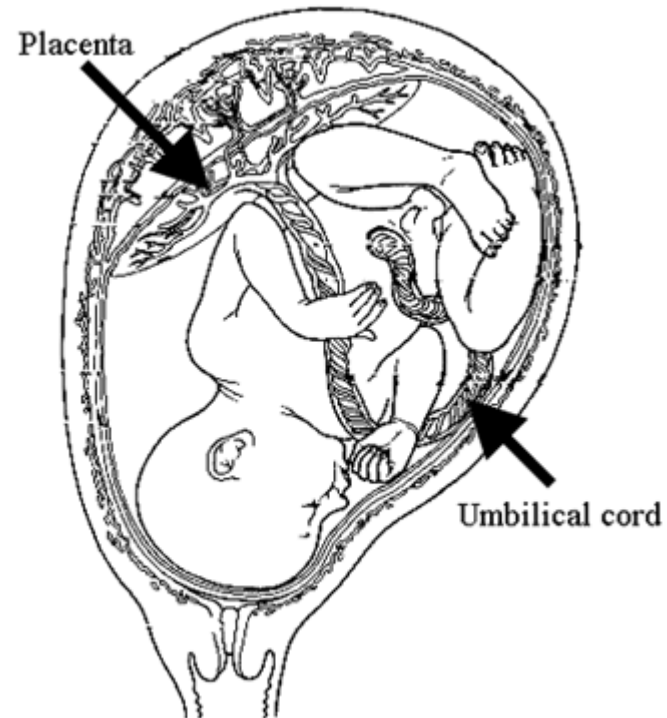
- What is contraception?
- Name one form of contraception.

2012 - Ordinary

- The **fusion** (joining) of the egg with the sperm is called
- There are many **methods of contraception**. Name one method.
- The **menstrual cycle** lasts about _____ days.

2011 - Higher

- Give **two** functions of the placenta.
- What is the function of the umbilical cord, which connects the baby to the placenta?
- Describe, briefly, four events that occur at the end of pregnancy (i.e. just before birth, at birth and just after birth).



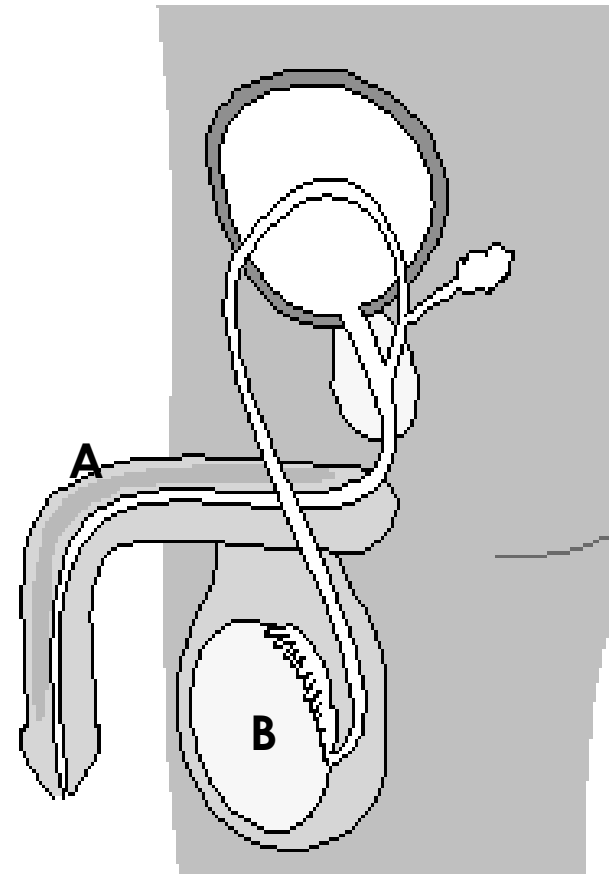
2011 - Ordinary

- In the table write the letter **A** beside the **name** of the part labelled **A**.
- Write the letter **B** beside the name of the **gamete produced** by **B**.

2011 - Ordinary

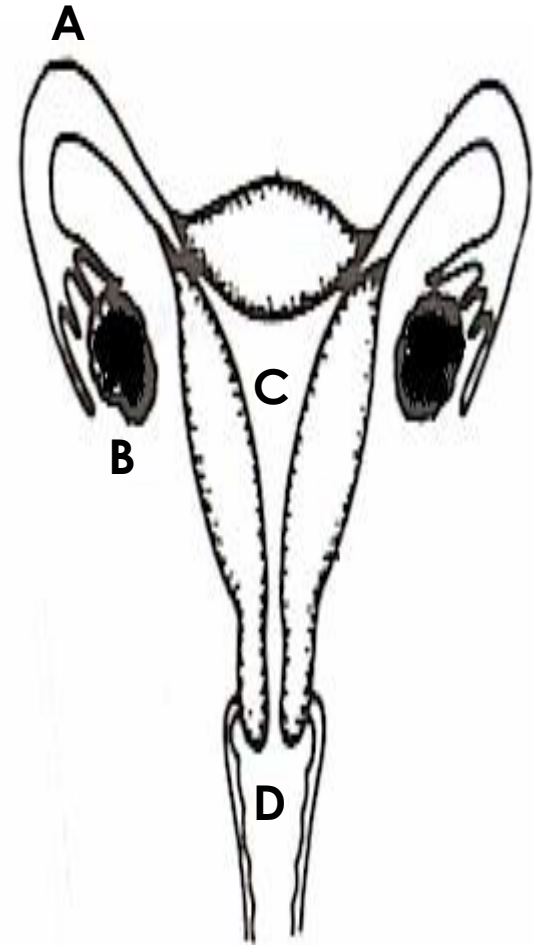
- In the table write the letter A beside the name of the part labelled A.
- Write the letter B beside the name of the gamete produced by B.

	Penis
	Ovary
	Sperm
	egg



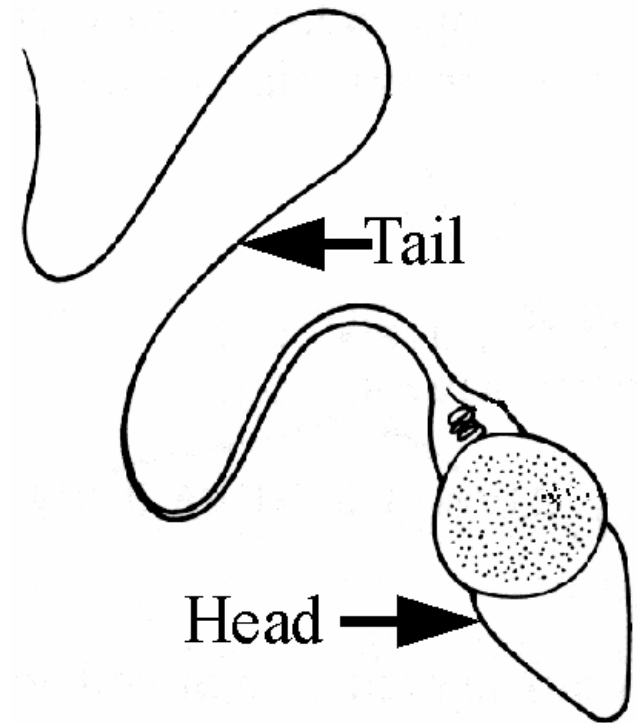
2010 - Ordinary

- An egg (female gamete) is released from the part labelled _____.
- The **fusion** (joining) of the egg with the sperm usually takes place in the part labelled _____.
- During **pregnancy** the baby develops in the part labelled _____.



2009 - Higher

- Why does the sperm need to be able to swim?
- Where does fertilisation occur?



2009 - Ordinary

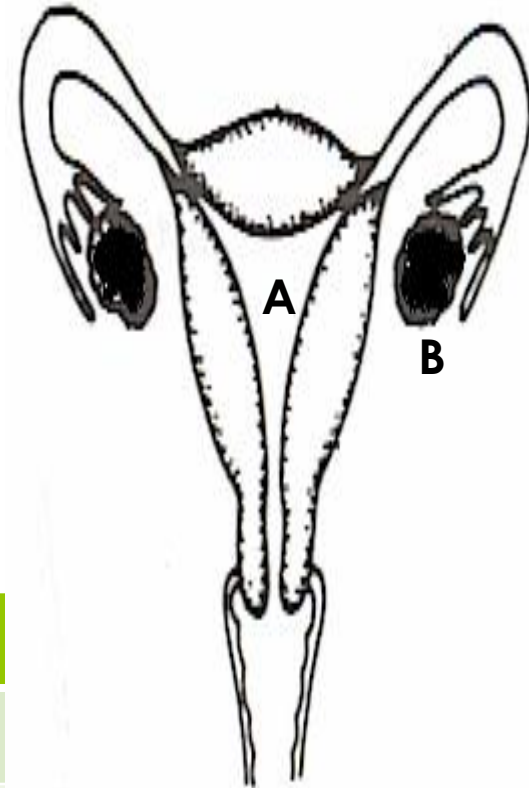
- In the table write the letter **A** beside the **name** of the part labelled **A**.

- Write the letter **B** beside the name of the **gamete produced** by **B**.

2009 - Ordinary

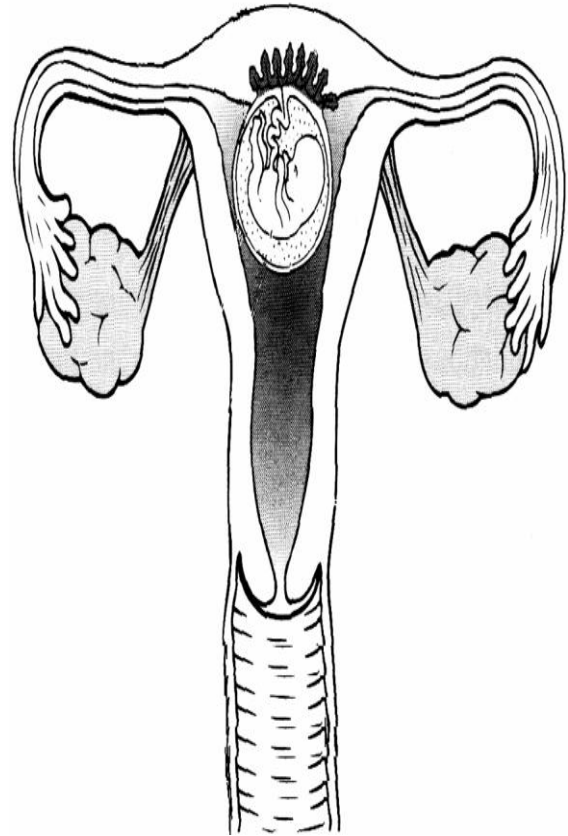
- In the table write the letter A beside the name of the part labelled A.
- Write the letter B beside the name of the gamete produced by B.

	Egg
	Ovary
	Sperm
	womb



2008 - Higher

- The diagram shows a *human female's reproductive system with an eight week embryo (foetus) which is clearly recognisable as human. The organs of the foetus are formed and will grow and mature for the next seven months.*



- Mark clearly on the diagram, **using an arrow and the label S, where the semen** (liquid containing sperm) **was released** into the female.
- Mark clearly on the diagram, **using an arrow and the label F, where fertilization** took place.
- Explain the term **fertilisation**.
- State **two events** that occur **in the hours before birth** and **one event** that takes place shortly **after the baby is born**.

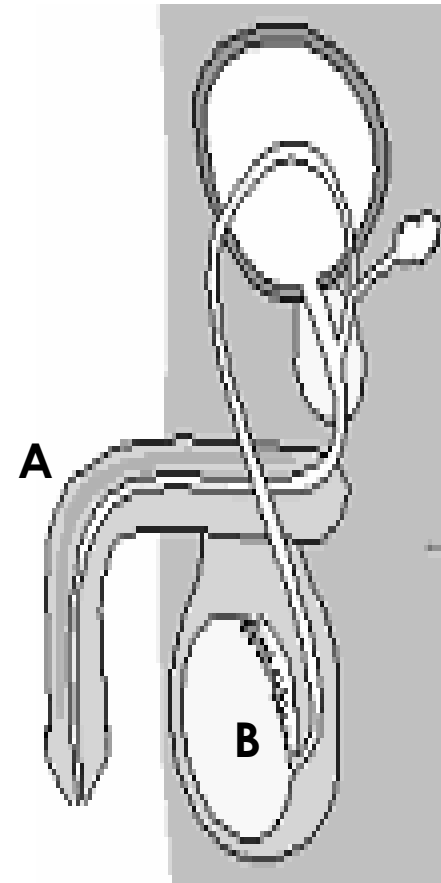
2007 - Ordinary

- In the table on the right write the letter **A** beside the name of **the part** labelled **A**.
- Write the letter **B** beside the name of a **substance produced** by **B**.

2007 - Ordinary

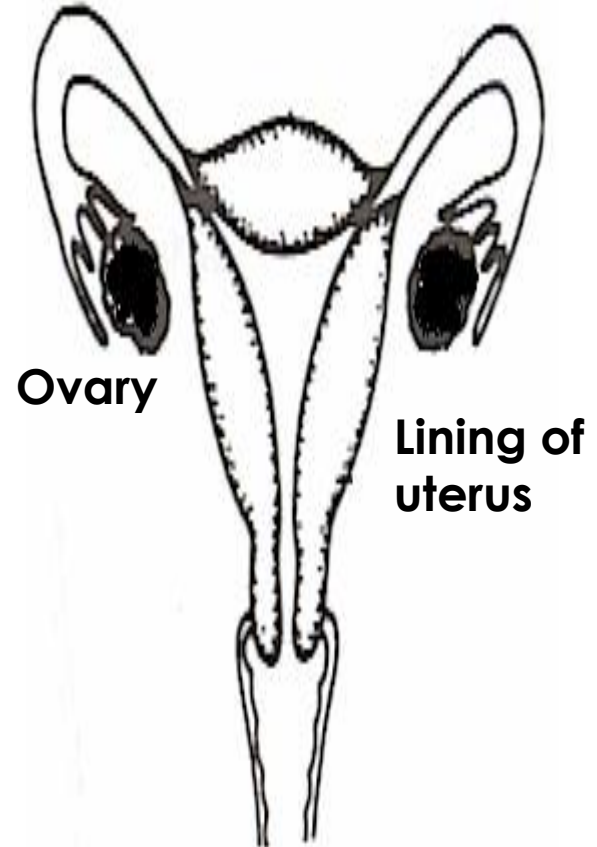
- In the table on the right write the letter A beside the name of the part labelled A.
- Write the letter B beside the name of a substance produced by B.

	Egg
	Penis
	Testes
	sperm



2006 - Higher

- The diagram shows the female reproductive system during the **fertile period** of the menstrual cycle.
- What happens in the ovary during this time?
- What happens to the lining of the uterus during this time?



2006 - Ordinary

- **Name** the parts of the female reproductive system labelled **A** and **B** in the diagram on the right.

